



**Maratha Vidya Prasarak Samaj's  
KARAMVEER SHANTARAMBAPU  
KONDAJI WAVARE ARTS, SCIENCE  
and COMMERCE COLLEGE, CIDCO,  
NASHIK**

**2024 KI: 4.1 Physical Facilities**



## Assessment and Accreditation

### Criterion- IV **Infrastructure and Learning Resources**

**QIM 4.1.1.** The Institution has adequate infrastructure and physical facilities for teaching- learning. viz., classrooms, laboratories, computing equipment etc.



**Maratha Vidya Prasarak Samaj's**  
**KARMAVEER SHANTARAMBAPU KONDAJI WAVARE**  
**ARTS, SCIENCE AND COMMERCE COLLEGE, CIDCO**

**Uttamnagar, Nashik- 422 008 (Maharashtra)**

Principal  
**Prof. (Dr) S. K. Kushare**  
M.Sc., Ph. D.

Affiliated to Savitribai Phule Pune University Id. No. PU/NS/ASC/047/1993  
AISHE C-42086NAAC Re-accredited 'B+' Grade (IV Cycle 2023-28, CGPA 2.66)  
Best College Award of Savitribai Phule Pune University Pune in 2009-10 and 2021-22

## Internal Quality Assurance Cell

### Criterion IV: Infrastructure and Learning Resources

2023-2024

#### 4.1 Physical Facilities

**4.1.1. The Institution has adequate infrastructure and physical facilities for teaching- learning. viz., classrooms, laboratories, computing equipment etc.**

#### Auxiliary Infrastructure facilities

##### Table of Contents

4.1.1 Information resource centre.....	3
4.1.2 LMS Studio: .....	4
4.1.3 Sports Grounds (Basketball Ground): .....	5
4.1.4 Sports ground (Volleyball Ground) .....	5
4.1.5 Gymnasium facilities: .....	6
4.1.6 Green Gymnasium .....	6
4.1.7 Board of students Development .....	8
4.1.8 Open Auditorium .....	8
4.1.9 Vehicles Parking Sheds.....	9
4.1.10 Cycle Stands .....	10
4.1.11 Rest Rooms units.....	11
4.1.12 Reverse Osmosis (R. O. Plant) .....	12
4.1.13 Water purifiers.....	12
4.1.14 Generator .....	13
4.1.15 Ramps.....	13
4.1.16 Wheelchairs for challenged students .....	14
4.1.17 Direction Guide Board.....	14
4.1.18 Information and Instruction Boards.....	15
4.1.19 Electrical Instruction Board.....	15
4.1.20 Campus Gate .....	16
4.1.21 Vermi Compost Unit.....	16
4.1.22 C. C. T. V. Cameras (Closed Circuit).....	17
4.1.23 Solar Panels: .....	18
4.1.24 Botanical Garden:.....	19
4.1.25 Weather Station:.....	20



## Auxiliary Infrastructural facilities

### 4.1.1 Information resource centre



#### 4.1.2 LMS Studio:





### 4.1.3 Sports Grounds (Basketball Ground):



### 4.1.4 Sports ground (Volleyball Ground)





#### 4.1.5 Gymnasium facilities:



#### 4.1.6 Green Gymnasium





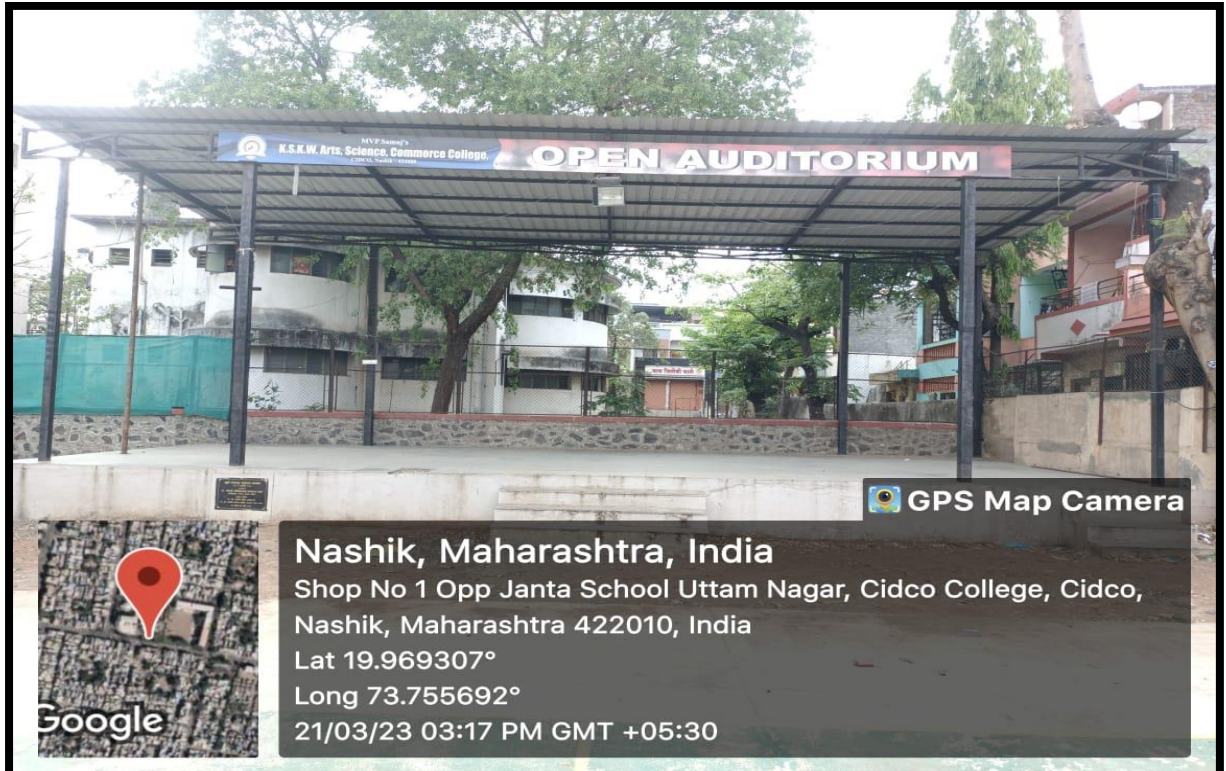




#### 4.1.7 Board of students Development



#### 4.1.8 Open Auditorium





### 4.1.9 Vehicles Parking Sheds





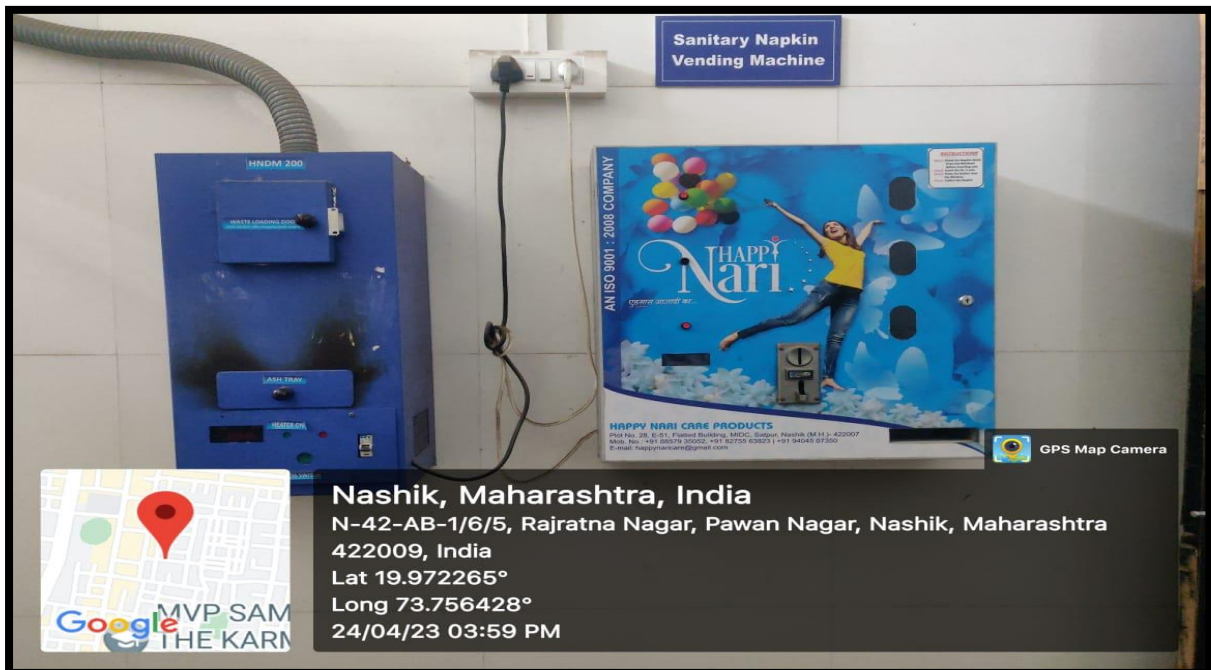
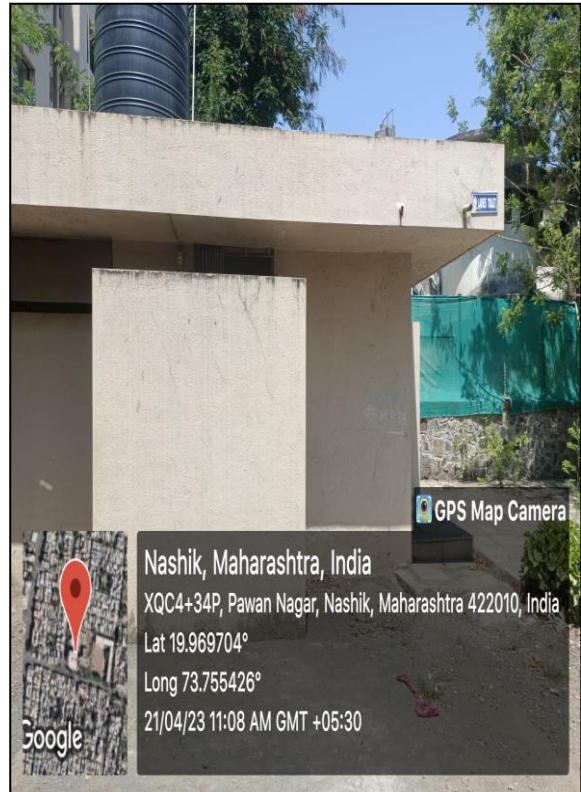
### 4.1.10 Cycle Stands





### 4.1.11 Rest Rooms units

(Female block with sanitary pad vending and disposal machine)



#### 4.1.12 Reverse Osmosis (R. O. Plant)



#### 4.1.13 Water purifiers

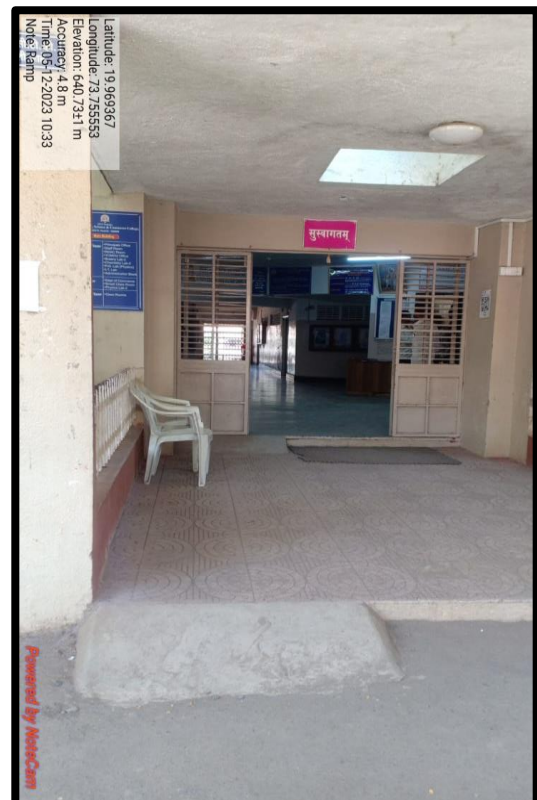
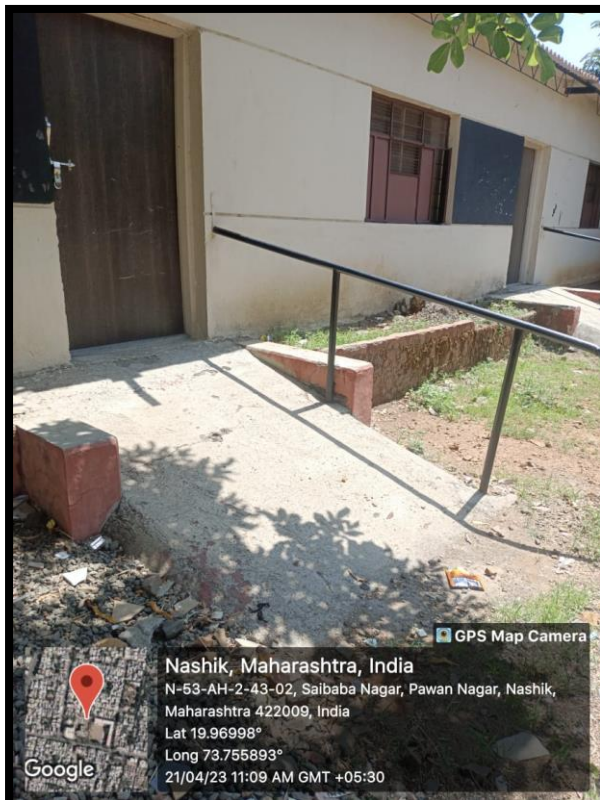




#### 4.1.14 Generator



#### 4.1.15 Ramps





### 4.1.16 Wheelchairs for challenged students

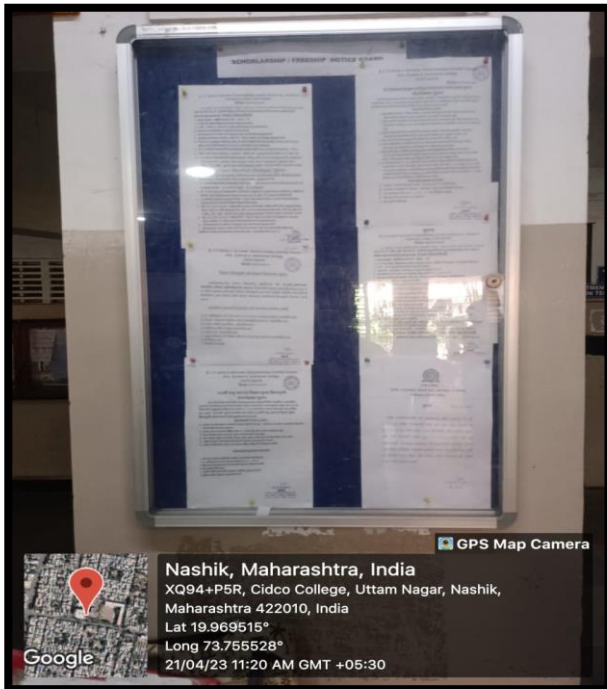


### 4.1.17 Direction Guide Board





#### 4.1.18 Information and Instruction Boards



#### 4.1.19 Electrical Instruction Board



#### 4.1.20 Campus Gate

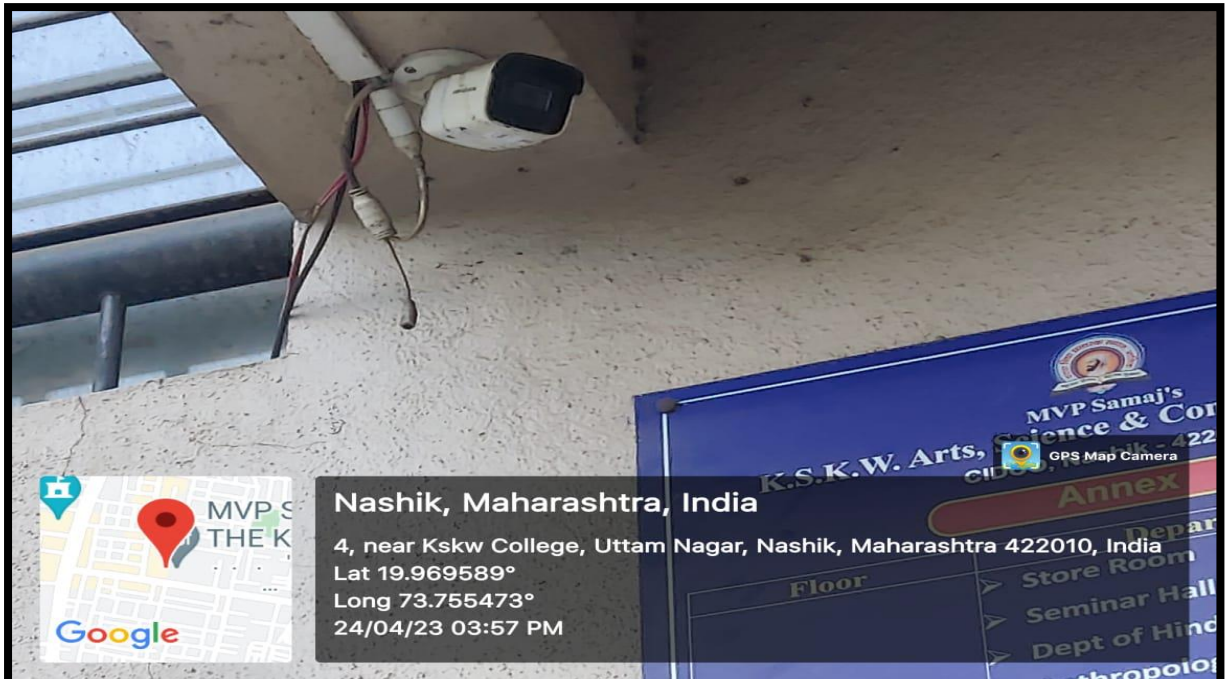


#### 4.1.21 Vermi Compost Unit

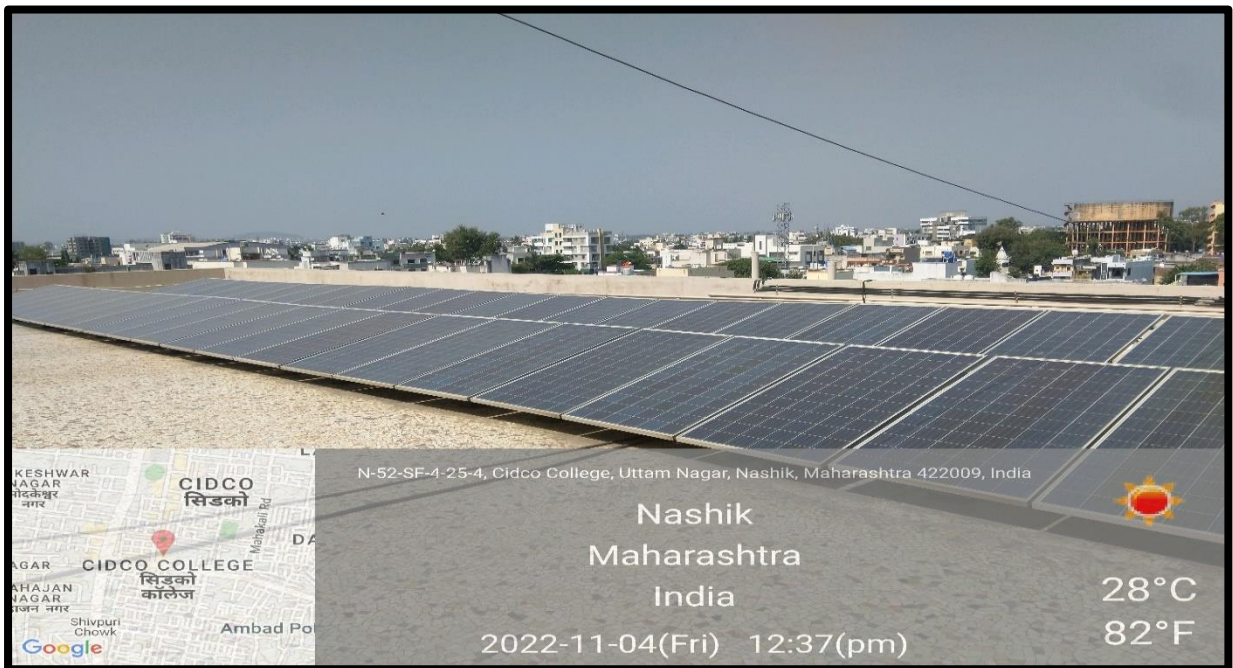




#### 4.1.22 C. C. T. V. Cameras (Closed Circuit)



### 4.1.23 Solar Panels:

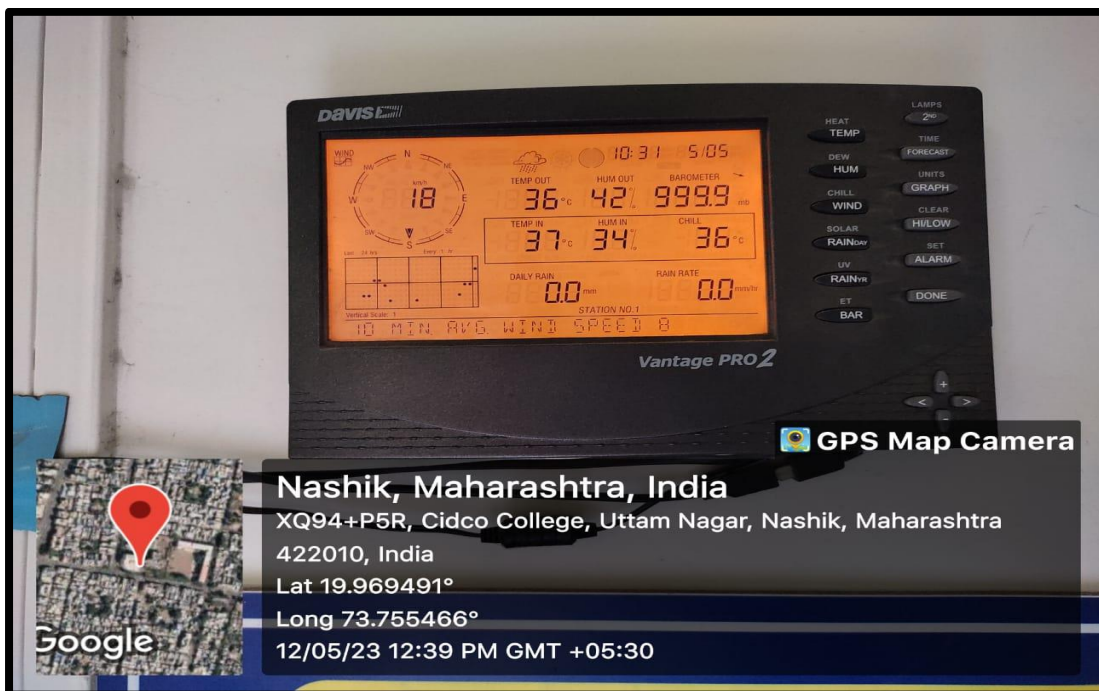
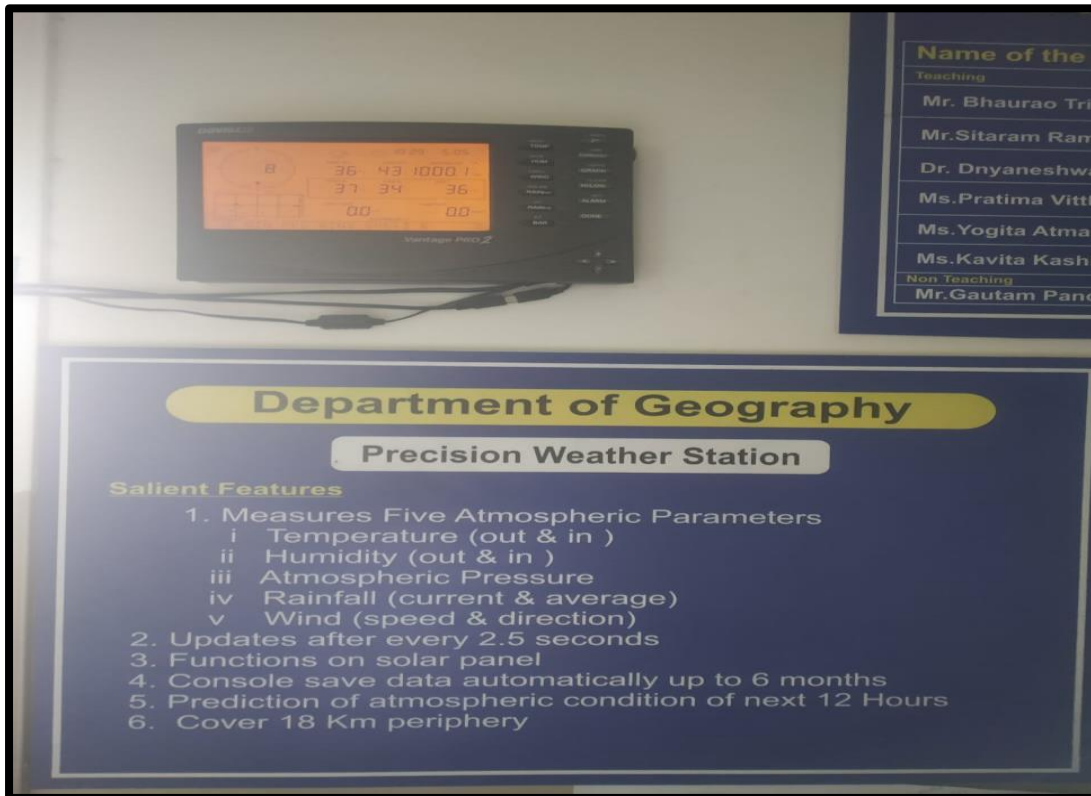




#### 4.1.24 Botanical Garden:



### 4.1.25 Weather Station:



*Kshud*  
**Principal**  
 Maratha Vidya Prasarak Samaj's  
 Karmaveer Shantarambapu Kondaji Wavare  
 Arts science and Commerce College  
 Uttamnagar, CIDCO Nashik-422008